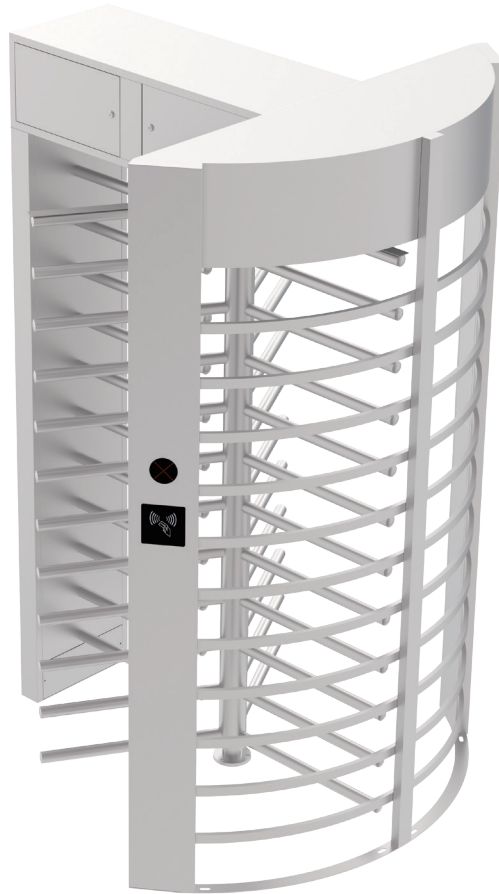


TD66

120°single door full height turnstile



Technical parameter

Type:full height turnstile

Lane quantity:one lane

automation:semi automatic,without motor

material:304 stainless steel

passage width:550mm

open door signal:relay from access controller

LED direction light:green and red

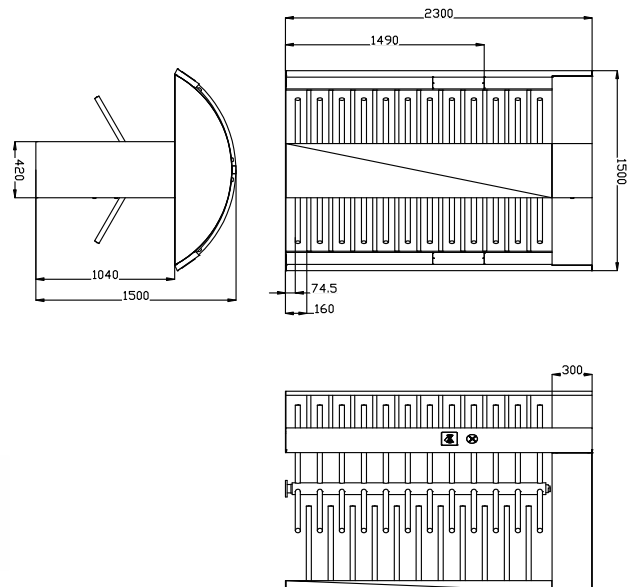
waterproof and dustproof:IP54

working environment:-25 to 70

relative humidity, 90% no condensation

input voltage:100-240V,50/60Hz

application scenarios:stadium,construction site,prison
and other high security places



* The appearance of the chassis can be customized according to requirements